

JERRY D. MORRIS RECREATION CENTER TEXAS A&M UNIVERSITY-COMMERCE

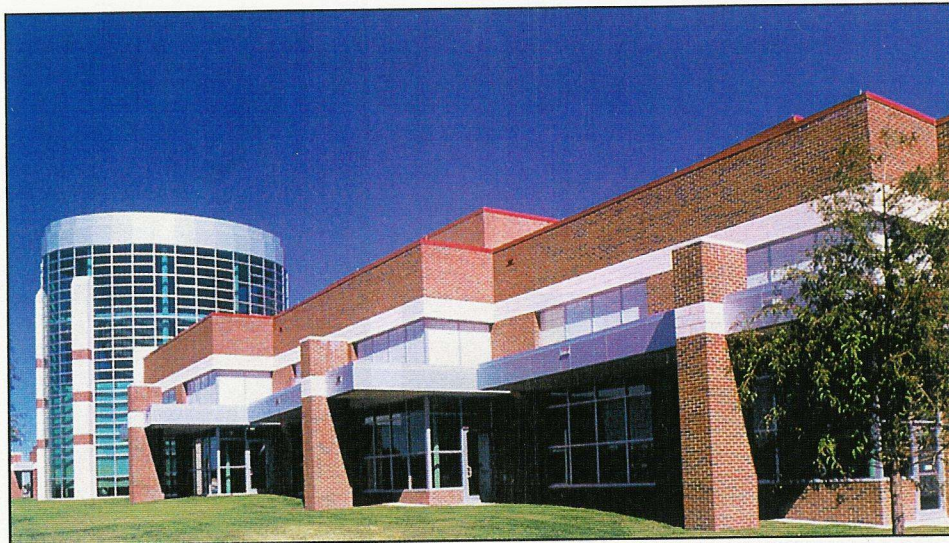
ARCHITECTURAL
Showcase
17th Annual-2004

Commerce, Texas

The Morris Recreation Center is designed to act as a highly visible icon for Texas A&M-Commerce, a predominantly commuter university. Large windows provide views into a weight/fitness room and of the 50-foot-tall climbing wall as one drives the main thoroughfare through Commerce. An outdoor activities area faces new student housing and provides pedestrians with glimpses of interior recreational activities.

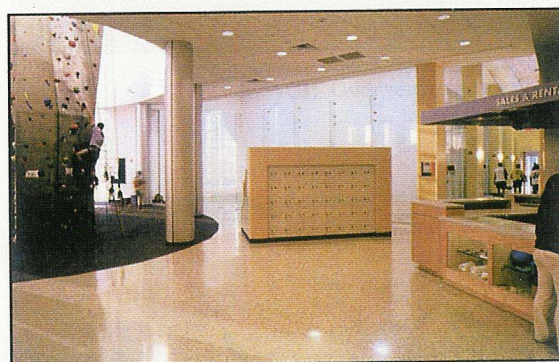
Once inside, visitors are greeted by a wide lobby with a control desk, as well as easy access and views to the two-court gymnasium, three-lane jogging track, weight/fitness room, climbing wall and four glass-fronted racquetball courts. Also included in the 51,000-square-foot interior are an aerobics room, locker rooms, administrative offices and a snack bar. The 48,000 square feet of outdoor activity space includes a leisure pool, a spa, two basketball courts and two sand volleyball courts.

The building's exterior incorporates beige CMU and the type of red brick found in existing campus structures. Extensive use of insulated glass in an aluminum storefront system and translucent wall panels help reduce energy costs and fill the interior with natural light.

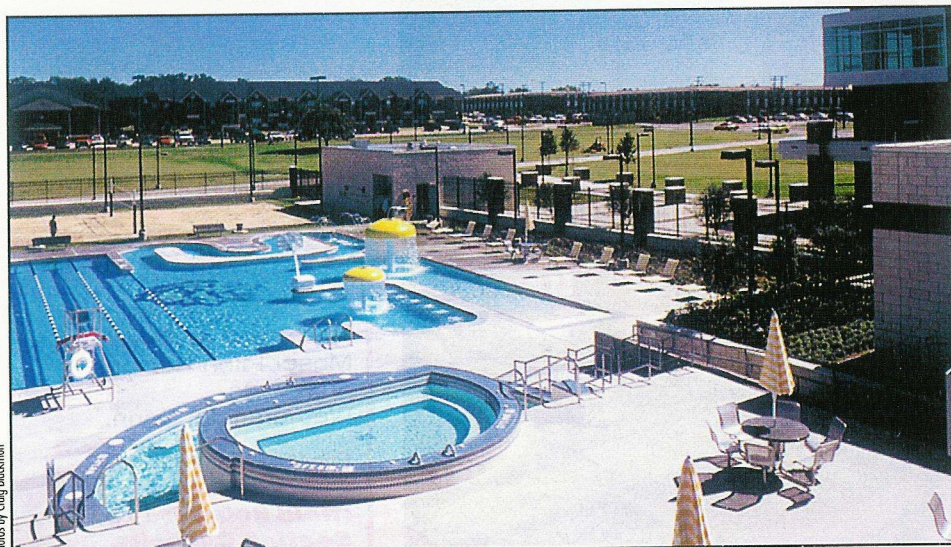


EXTENSIVE USE OF INSULATED GLASS PROVIDES PEDESTRIANS ENTERING THE MORRIS RECREATION CENTER WITH GLIMPSES OF ACTIVITIES TAKING PLACE INSIDE.

A kinesiology building occupied the site prior to construction, so the new leisure pool was positioned over an existing indoor pool to minimize costs associated with excavation and utilities. Future expansion of the building is planned, including the addition of a competitive indoor pool to the north that will form a U-shaped courtyard around the outdoor activity spaces. Locker rooms are purposely located on the north side of the first-phase building to easily facilitate the future natatorium addition.



ONCE INSIDE, VISITORS ARE GREETED BY A WIDE LOBBY WITH A CONTROL DESK, AS WELL AS EASY ACCESS AND VIEWS TO THE CLIMBING WALL, GLASS-FRONTED RACQUETBALL COURTS AND OTHER RECREATION SPACES.



Photos by Craig Blackman

THE NEW LEISURE POOL WAS POSITIONED OVER A FORMER KINESIOLOGY BUILDING'S INDOOR POOL, MINIMIZING COSTS ASSOCIATED WITH EXCAVATION AND UTILITIES.

Architect of Record:
F&S Partners Inc.
Dallas, Texas

Aquatic Design Engineer:
Councilman/Hunsaker
and Associates Inc.
St. Louis, Mo.

Cost: \$9.99 million
Square Feet: 51,295
Occupancy: July 2003